

# 1. Product specification

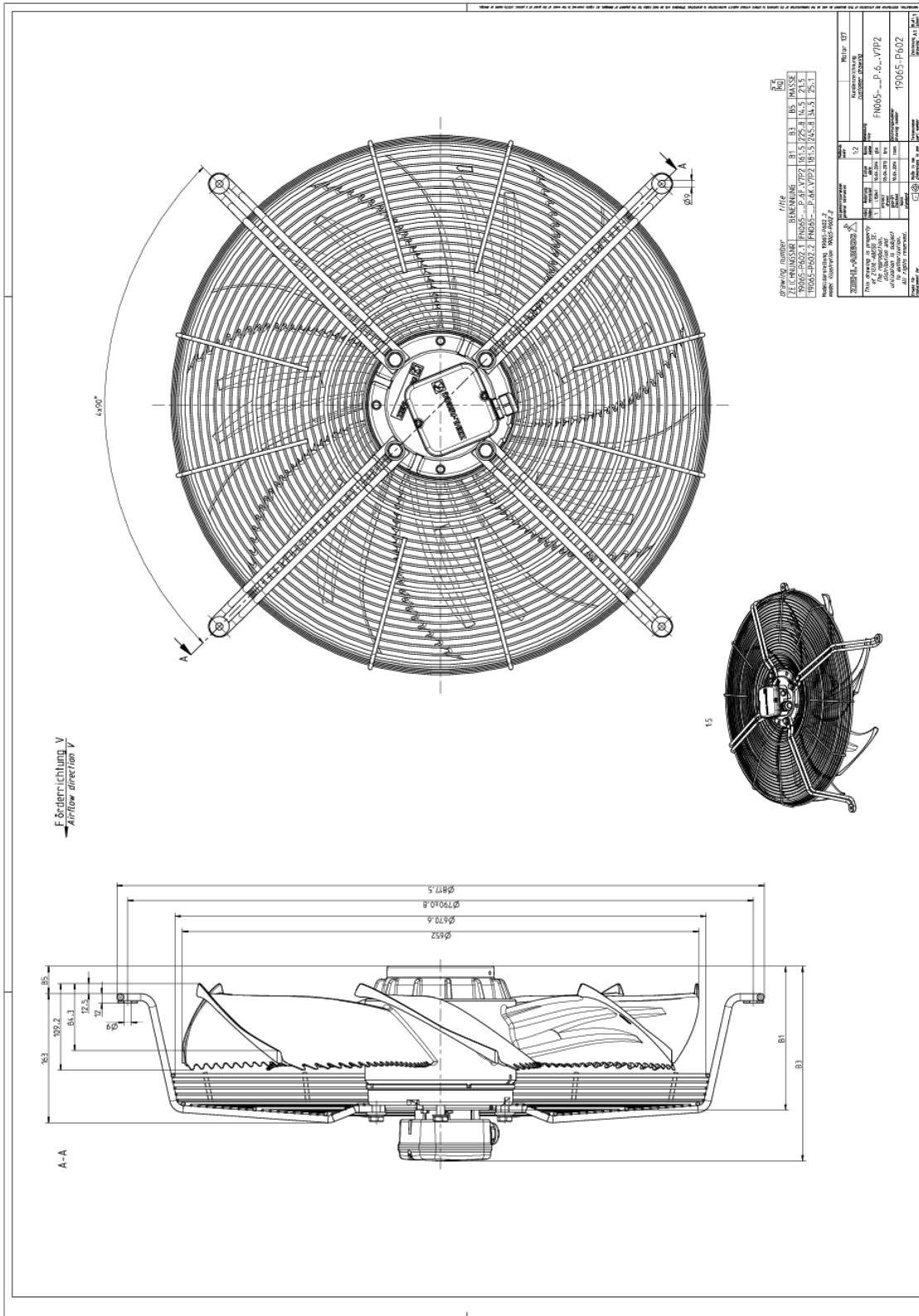
## Technical data

<b>Article number</b>	163787
<b>Type</b>	FN065-SDP.6F.V7P2
<b>Designation</b>	Axial fan with sickle blades
<b>Rated values</b>	3~400V±10% D/Y 50Hz P <sub>1</sub> 0,70/0,54kW 1,40/ 0,92A ΔI=15% 930/ 760/min COSY 0,72 70°C 3~400V±10% D/Y 60Hz P <sub>1</sub> 1,10/0,62kW 1,90/ 1,15A ΔI=10% 1030/ 680/min COSY 0,77 50°C 3~460V±10% D/Y 60Hz P <sub>1</sub> 1,15/0,76kW 1,80/ 1,20A ΔI=15% 1080/ 780/min COSY 0,80 50°C
<b>Electrical connection</b>	Terminal box K62
<b>Min. operating temperature °C</b>	-40***
<b>Mounting type terminal box</b>	Mounted on Stator
<b>Type of protection</b>	IP54
<b>Thermal class</b>	THCL155
<b>Connection diagram</b>	1360-108XA
<b>Rating plate</b>	1x fixed
<b>Fitting position</b>	H/Vu/Vo
<b>Motor protection</b>	thermal contact
<b>Impregnation</b>	Moisture and hot climate protection
<b>Quality of bearings</b>	ball bearing with long-time lubrication
<b>Material Rotor</b>	Aluminium
<b>Painting rotor</b>	unpainted
<b>Material blades</b>	Aluminium
<b>Painting impeller</b>	unpainted
<b>Guard grille type</b>	ring grill
<b>Control</b>	--
<b>Other</b>	All connecting elements in stainless steel.
<b>Painting mot.suspens</b>	Motor suspension powder-coated consistency class 2
<b>colour suspension</b>	RAL 9005 (jet black)
<b>Weight kg</b>	21,50
<b>ErP Data</b>	Efficiency $\eta_{\text{statA}}$ : 38 % Efficiency grade: $N_{\text{actual}} = 45,5 / N_{\text{target}} = 40^*$ *ErP 2015

\*\*\* Occasional operation  $\leq -20^{\circ}\text{C}$  and in consideration of lowest temperature according to product documentation permissible. For cooling applications with continuous operation  $\leq -20^{\circ}\text{C}$  cold design on request.

# The Royal League Die Königsklasse

## 2. Drawing



Dimensions in mm

Shown drawing is just to show the dimensions of the fan.

www.ziehl-abegg.com  
ErstellsQQQXXXYYdate

Movement by Perfection | Bewegung durch Perfektion

# The Royal League

## Die Königsklasse

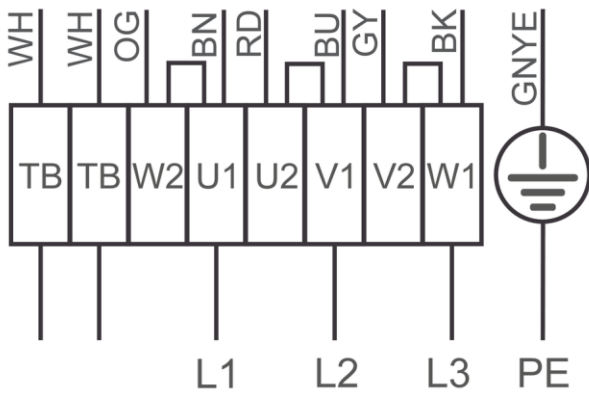
### 3. Connection diagram

1360-108XA

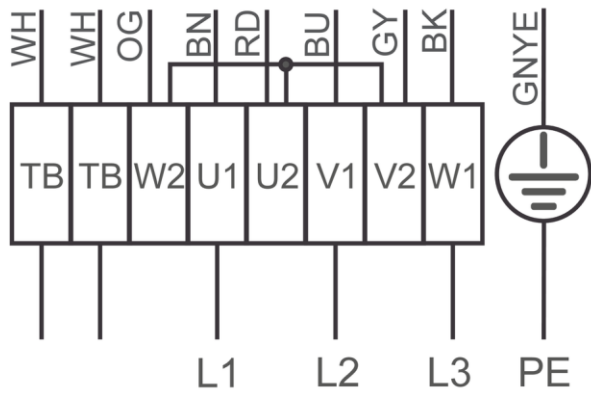
3~ motor, 2 speeds ( $\Delta/Y$  switch over) with thermostatic switch (if built in). Without bridge when using speed change-over switch.

BN brown  
 BU blue  
 BK black  
 RD red  
 GY grey  
 OG orange  
 WH white  
 GNYE green-yellow

High speed/D-connection



Low speed/Y-connection



## 4. EU-Declaration of conformity

### EC-Declaration of conformity

- Translation -  
(english)  
ZA75-GB 1616 Index 011  
00285644-GB

**Manufacturer:** ZIEHL-ABEGG SE  
Heinz-Ziehl-Straße  
74653 Künzelsau  
Germany

The manufacturer is solely responsible for issuance of the declaration of conformity.

#### The products:

- External rotor motor MK..., MW..
- Axial fan FA..., FB..., FC..., FE..., FF..., FS..., FT..., FH..., FL..., FN..., FV..., DN..., VR..., VN..., ZC..., ZF..., ZN..
- Centrifugal fan RA..., RD..., RE..., RF..., RG..., RH..., RK..., RM..., RR..., RZ..., GR..., ER..
- Cross-flow fan QK..., QR..., QT..., QG..

#### The engine type:

- Asynchronous internal or external rotor motor
- Asynchronous internal or external rotor motor with integrated frequency inverter, except EDP system
- Electronically commutated (EC) internal or external rotor motor
- Electronically commutated internal or external rotor motor with integrated EC Controller, except EDP system

#### These products comply with the following EU directives:

- EMC Directive 2014/30/EU
- Low voltage directive 2014/35/EU
- ErP Directive 2009/125/EC, in conjunction with Regulation (EU) no. 327/2011

#### The following harmonized standards are in use:

EN 60034-1:2010 + Cor.:2010   EN 61000-6-3:2007 + A1:2011 + AC:2012  
EN 60204-1:2006 + A1:2009 + AC:2010                            EN 61000-6-2:2005 + AC:2005  
EN 60529:1991 + A1:2000 + A2:2013

Compliance with the ErP Directive 2009/125/EC does not refer to external rotor motors MK..., MW..

All ErP-relevant information comprises measurements which are determined using a standardised measurement set-up. More details can be obtained from the manufacturer.

Compliance with the EMC Directive 2014/30 / EU refers only to those products when they are connected by mounting / operating instructions . If these products are integrated into a system or supplemented with other components (eg. sensing controls) and operated , the manufacturer or operator is responsible of the overall system for compliance with the EMC Directive 2014/30 / EU .

Künzelsau, 20.04.2016  
(Location, date of issue)

ZIEHL-ABEGG SE  
Dr. W. Angelis  
Technical Director Air Movement Division  
(Name, Function)

*Dr. W. Angelis*

(Signature)

**ZIEHL-ABEGG** 

# The Royal League

## Die Königsklasse



The Royal League in ventilation, control and drive technology

## Intelligent control technology for any application

**ZIEHL-ABEGG system capabilities:**  
Everything from a single source – perfectly matched for optimal performance

Please contact us. We would be pleased to design an individual solution for your requirements.

We would like to welcome you on our worldwide exhibitions. Please find our next exhibitions [here](#).