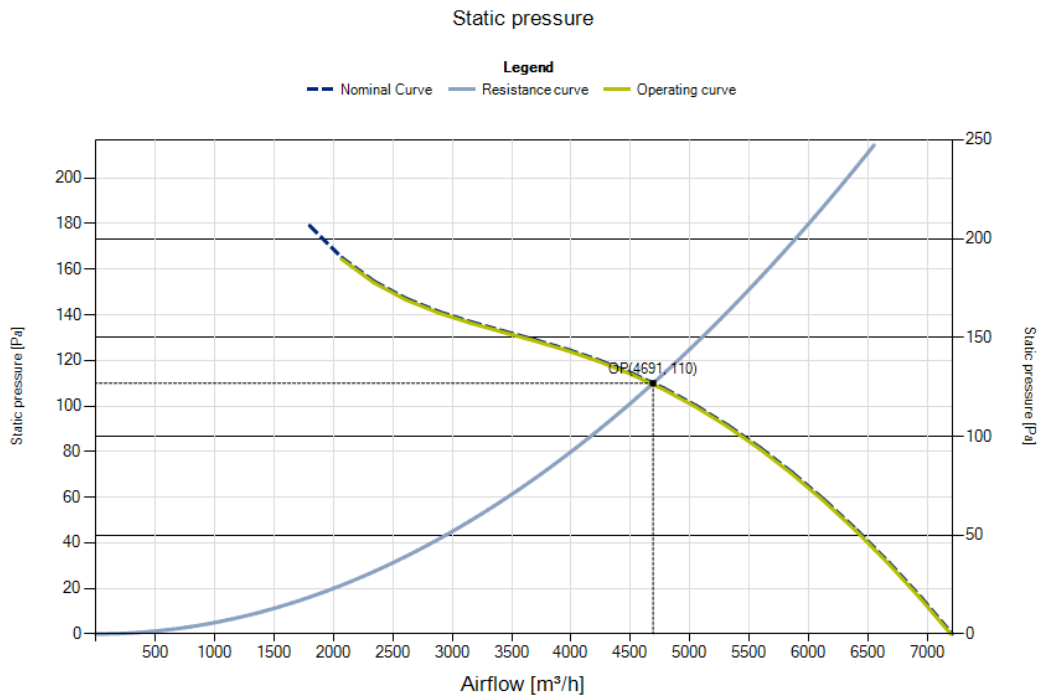


R10R-50APS-ES50B-09C17

EC Axial Fans with

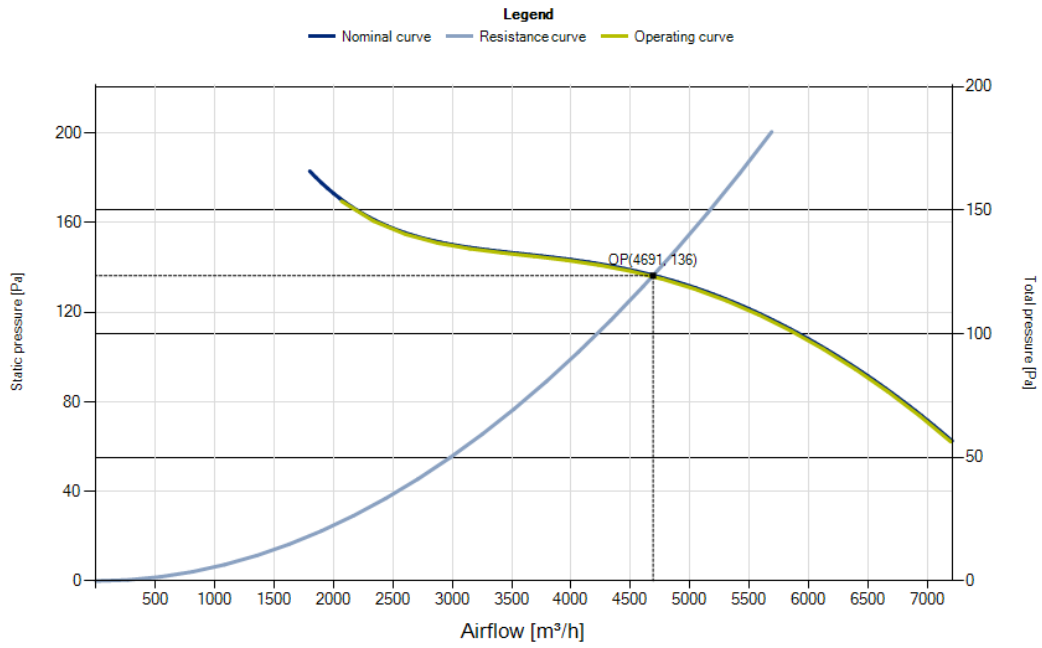
Ordering code: 0310-4-0131

Operating Point		Nominal data		Erp Data	
Air flow [m3/h]	4691	Phase [~]	1	Overall efficiency [%]	49.0
Static pressure [Pa]	110	Voltage [V]	230 / 230	Measurement cat.	A
Density [kg/m3]	1.2	Voltage range [V]	200-240	Efficiency category	static
Total pressure [Pa]	136	Frequency [Hz]	50 / 60	Efficiency grade N	58.5
Rotation speed [1/min]	1099	Input power [W]	300 / 300	Variable speed drive	INTEGRATED
Input power [W]	333	Input current [A]	2 / 2	Power input [kW]	0.32
Current [A]	2.17	Nominal speed [rpm]	1100 / 1100	Airflow [m3/h]	4691
Total efficiency [%]	53	Min. ambient temp. [°C]	-25	Pressure drop [Pa]	110
Static efficiency [%]	43	Max. ambient temp. [°C]	65	Rotational Speed [rpm]	1110
Sound power Outlet [dB]	76	Protection class	IP54	Specific ratio	1.00
Weighted sound power Outlet [dB(A)]	70	Insulation class	130		
Sound power inlet [dB]	0	Capacitor [µF/450V]	0.00		
Weighted sound power inlet [dB(A)]	0	K. Value	0		
Sound pressure [dB]	59	Connection	0 / 0		
Weighted sound pressure [dB(A)]	58	Weight [Kg]	7.4		



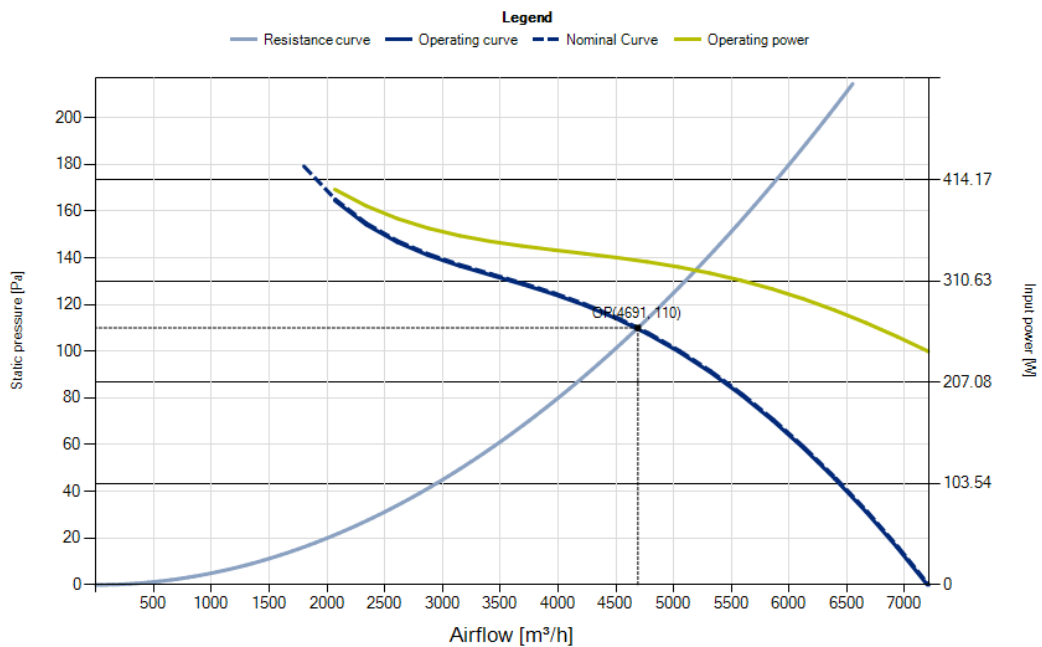
Measured according to ISO 5801, installation type A. Measured in full bell mouth without guard grill.

Total pressure



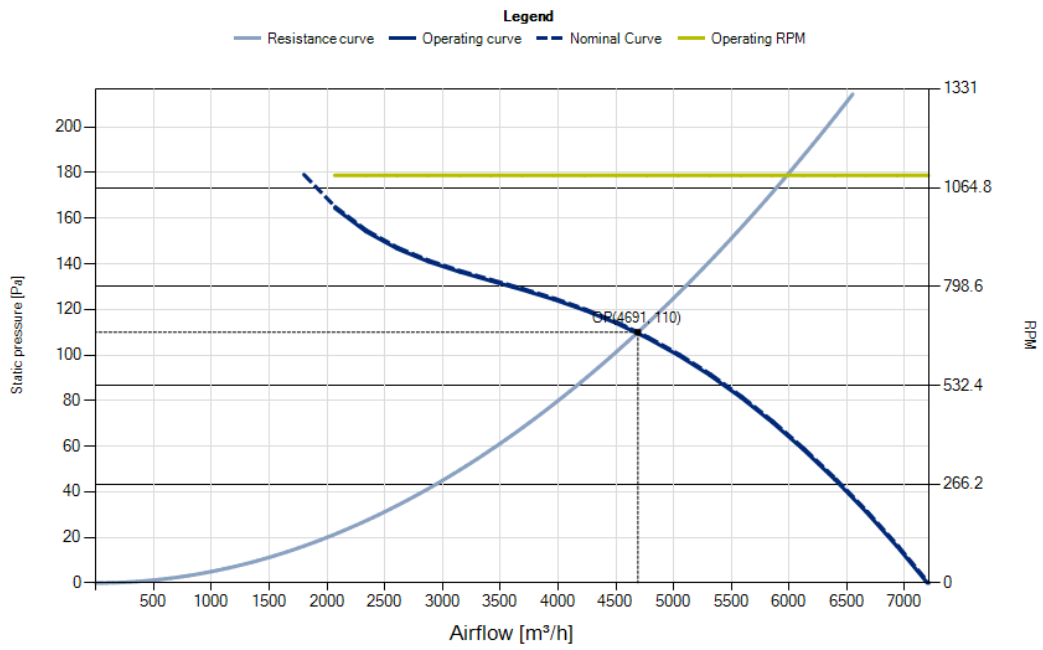
Measured according to ISO 5801, installation type A. Measured in full bell mouth without guard grill.

Input power

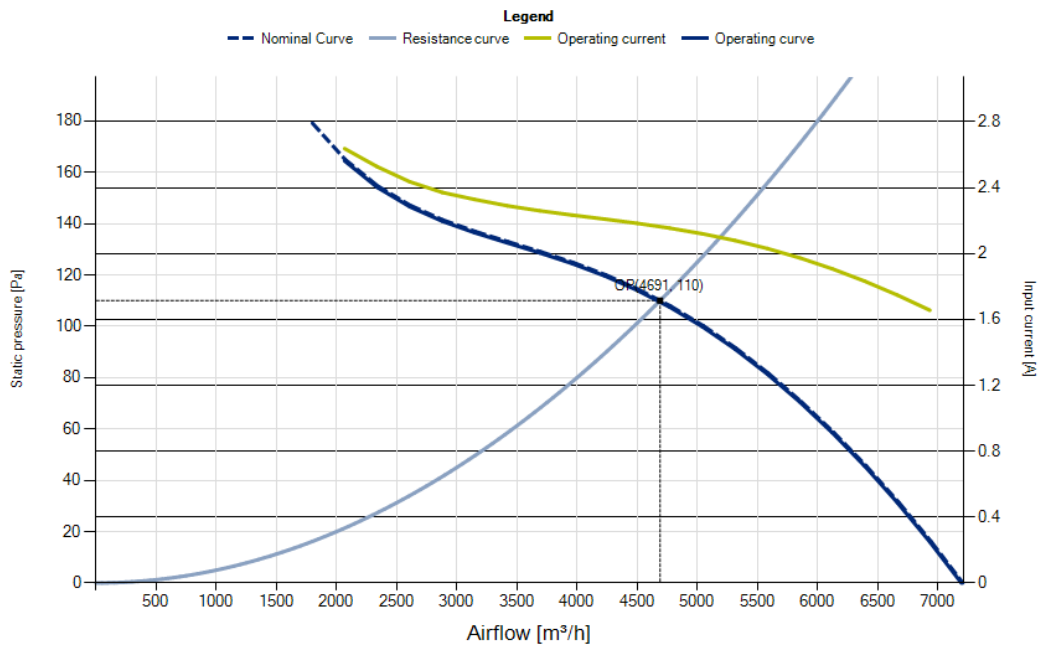




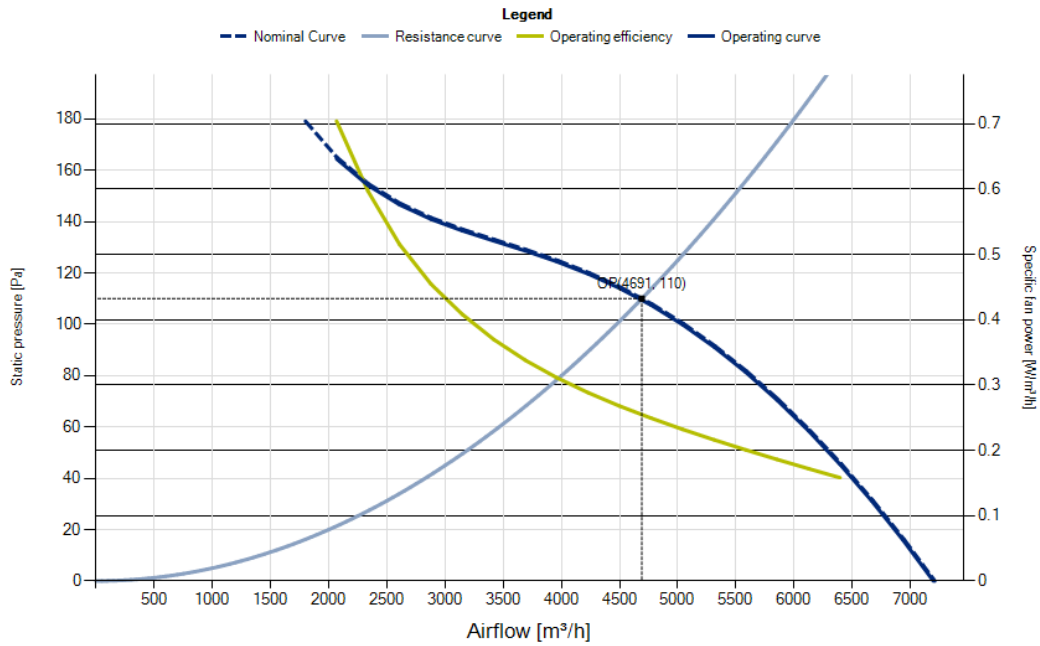
RPM



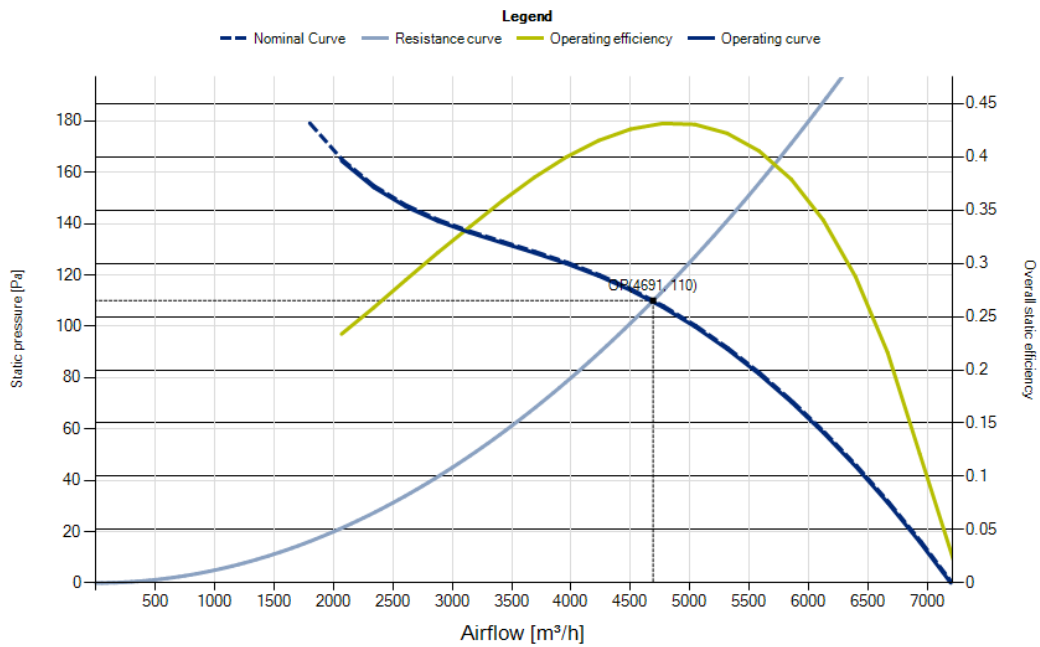
Input current



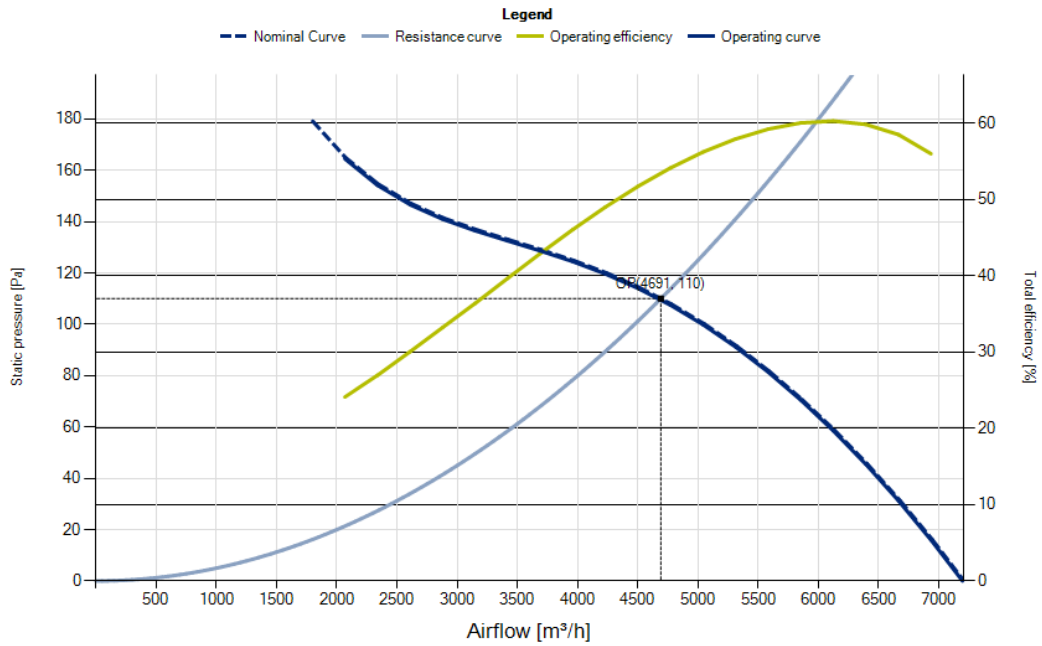
Specific fan power



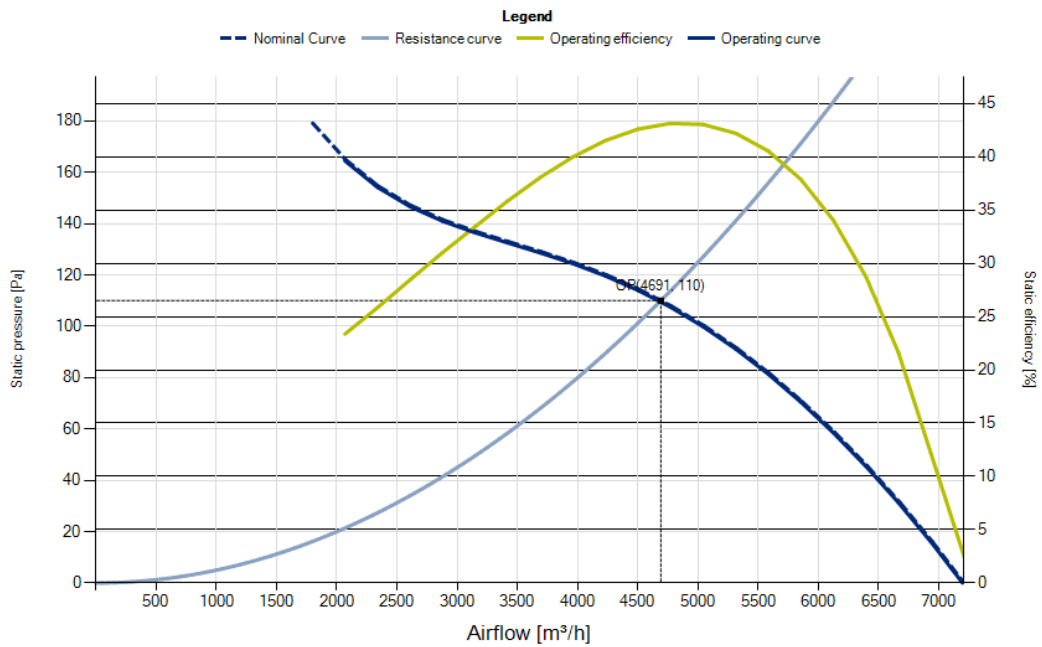
Overall static efficiency



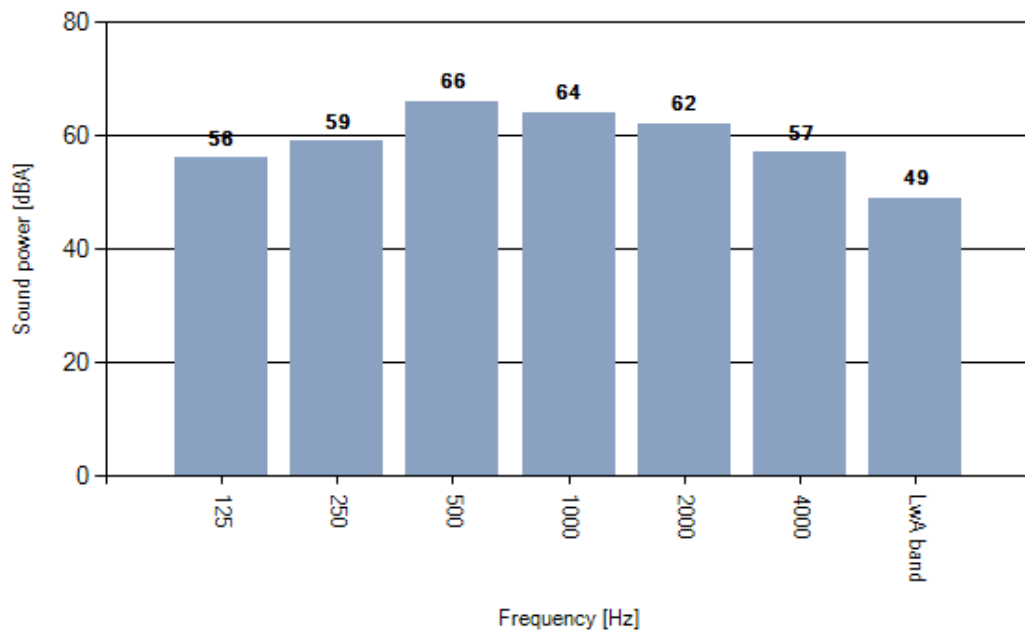
Total efficiency



Static efficiency



Weighted octave sound power spectrum Outlet



Measured according to ISO 3744 and ISO 13347, installation type A. Measured in full bell mouth without guard grill. The value given may vary according to actual installation of the unit.